

## MOHAWK DIMENSIONAL

A diverse product line of perforated and scored packaging, promotional, photo and presentation products for short run digital printing made from premium papers and synthetic substrates for superior print results. Just print and assemble.



mohawk

1 800 THE MILL

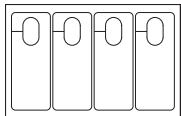
# MOHAWK DIMENSIONAL

See individual product lines for specifications.

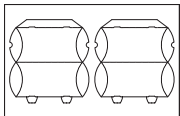
## MANUFACTURING REQUIREMENTS

Minimums start at 2,500 sheets for specials. Contact [digitalcustoms@mohawkpaper.com](mailto:digitalcustoms@mohawkpaper.com) on special inquiries.

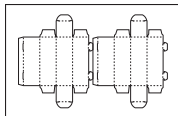
### FINE PAPER 18 X 12



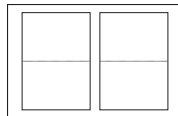
Door Hanger 4-up  
4 x 10



Gift Box 2-up  
6.85 x 3.55 x 1.1



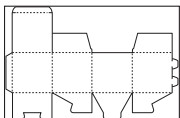
Golf Ball Sleeve 2-up  
5 x 1.7 x 1.7



Greeting Card 2-up  
5 x 7



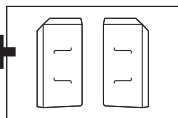
Table Tent 2-up  
9 x 4 x 2.6



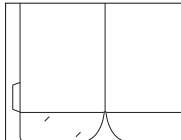
4 x 4 Box 1-up  
4 x 4 x 4



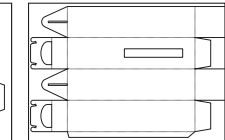
Pocket Folder Two Part Set: includes Scored  
9 x 12 Folder and 4-inch pre-taped pockets



### FINE PAPER 20.5 X 14.33

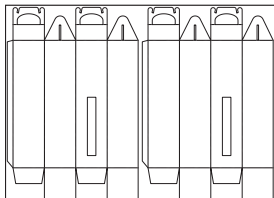


Pocket Folder Tape Tab  
8.75 x 11.25, 3 inch pockets



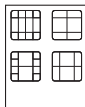
Wine Bottle Box (Window)  
3.23 x 3.23 x 13.125

### FINE PAPER 20 X 28

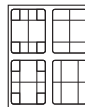


Wine Bottle Box (Window) 2-up  
3.23 x 3.23 x 13.125

### FLIP CARD 8.5 X 11



Flip Card  
3 x 3

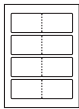


Flip Card  
3.5 x 4.5

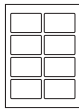
Templates are supplied as Adobe Illustrator® layered pdf files. Files may also be placed in other design applications as a separate base layer. Make sure that the template layer is turned off when imaging or submitting to printer. Blank design templates for all formats are available at [mohawkconnects.com/makeready](http://mohawkconnects.com/makeready).

# MOHAWK DIMENSIONAL

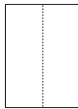
## SYNTHETIC 8.27 X 11.69



Butterfly Fold-Over ID Cards 4-up  
2.125 x 3.375 folded



Peel Off ID Cards 8-up  
2.125 x 3.375



Pre-Score Vertical 1-up  
4.135 x 11.67 folded



Pre-Score Horizontal 1-up  
5.345 x 8.27 folded

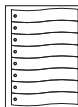
## SYNTHETIC 8.5 X 11



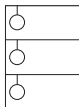
Badge 6-up  
3.5 x 2.75



Badge 8-up  
3.375 x 2.125



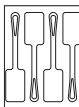
Bookmark 8-up  
1.25 x 7



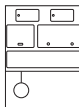
Door Hanger 3-up  
3.66 x 8.5



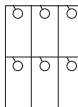
ID Card 6-up  
3.375 x 2.125



Luggage Tag 4-up  
3.375 x 2  
excluding loop



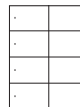
Multi Pack  
various sizes



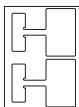
Parking Pass 6-up  
2.833 x 5.5



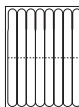
Plant Tag 13-up  
.625 x 8



Tag 8-up  
4.25 x 2.75



Wobblers 2-up  
4.75 x 3.1 excluding tab



Wrist Band 8-up  
pre taped  
1 x 10.4375

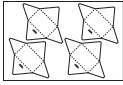


Wrist Band 8-up  
pre taped  
1 x 11

Templates are supplied as Adobe Illustrator® layered pdf files. Files may also be placed in other design applications as a separate base layer. Make sure that the template layer is turned off when imaging or submitting to printer. Blank design templates for all formats are available at [mohawkconnects.com/makeready](http://mohawkconnects.com/makeready).

# MOHAWK DIMENSIONAL

## C1S 17 X 11



Gift Card Holder 4-up  
3.5 x 2.25

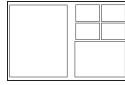
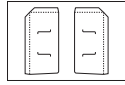


Photo Picture Sheet  
8 x 10, 5 x 7,  
four 2.375 x 3.375



Pocket Folder  
Pockets Only  
pre taped  
4 inch pockets

## C1S 13 X 19

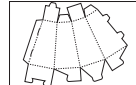
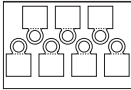
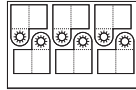


Photo Tower 1-up  
tapers from 2 to 3.75  
x 6.5

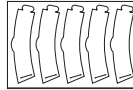
## C1S 18 X 12



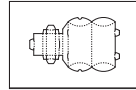
Bottle Necker 7-up  
5.1875 x 3.375



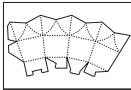
Bottle Necker Folded  
6-up  
2.5 x 2.875



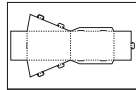
Cup Sleeve 5-up  
10 x 2.25



Flash Drive Mailer 1-up  
5 x 3 x 1.875



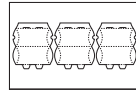
Flower Top Box 1-up  
5.5 x 4.25



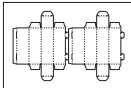
Four-Sided Tent Card  
1-up  
4 x 6 x 2.375



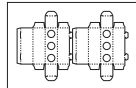
General Purpose Box  
1-up  
4.75 x 3.1 x 2



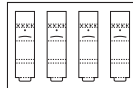
Gift Box 3-up  
4.625 x 2.375 x .75



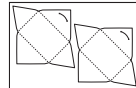
Golf Ball Sleeve 2-up  
5 x 1.7 x 1.7



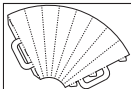
Golf Ball Sleeve With  
Holes 2-up  
1.625 x 5.5 x 1.625



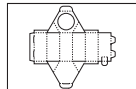
Golf Tee-Marker Pack  
4-up  
2.625 x 2.5 x .5



Invitation Mailer 2-up  
4 x 6



Megaphone 1-up  
10 inches in length



Pen/Pencil Cup 1-up  
5.5 x 4.25

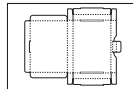


Photo Card Box 5 x 7  
1-up  
5.5 x 7.5 x .75

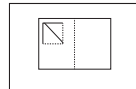
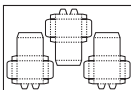
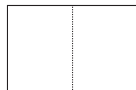


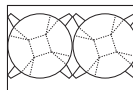
Photo Postcard With  
Stand 1-up  
5 x 7



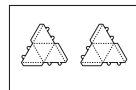
Playing Card Box 3-up  
2.5 x 3.625 x .75



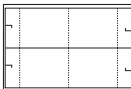
Pocket Folder Scored  
Folder Only 1-up  
9 x 12



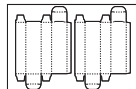
Popcorn/Candy Bowl  
2-up, 3.25 deep, 2 x 2  
base, 6 inch opening



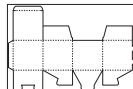
Pyramid Box 2-up  
3 x 3 x 3



Tent Card Vertical 2-up  
5.5 x 6.75



Toothpaste Box 2-up  
2.125 x 7.125 x 1.375



4 x 4 Box 1-up  
4 x 4 x 4

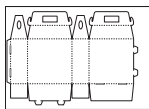
Templates are supplied as Adobe Illustrator® layered pdf files. Files may also be placed in other design applications as a separate base layer. Make sure that the template layer is turned off when imaging or submitting to printer. Blank design templates for all formats are available at [mohawkconnects.com/makeready](http://mohawkconnects.com/makeready).

# MOHAWK DIMENSIONAL

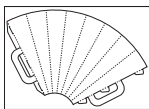
## C1S 20.5 X 14.33



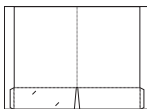
General Purpose Box  
1-up  
6 x 3.875 x 2.5



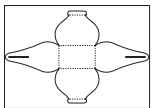
Lunch Box 1-up  
6.25 x 6.125 x 2.375



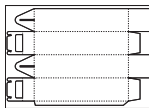
Megaphone 1-up  
11 inches in length



Pocket Folder Tape  
Tab 1-up  
8.75 x 11.25,  
3 inch pockets



Purse Box 1-up  
5 x 3.21 x 4.5



Wine Bottle Box (No  
Window) 1-up  
3.375 x 13.25 x 3.375

Templates are supplied as Adobe Illustrator® layered pdf files. Files may also be placed in other design applications as a separate base layer. Make sure that the template layer is turned off when imaging or submitting to printer. Blank design templates for all formats are available at [mohawkconnects.com/makeready](http://mohawkconnects.com/makeready).

# MOHAWK DIMENSIONAL

## MOHAWK CAST-COATED ONE SIDE

WEIGHT LBS/GSM	INCHES	MM	M WT	SHEETS/ PACKAGE	SHEETS/ CARTON	CODE NUMBER
<b>4 X 4 BOX 1-UP</b>						
14pt/298	18 x 12	457 x 305	91	—	100	53613
	18 x 12	457 x 305	91	—	500	53614
<b>BOTTLE NECKER 7-UP</b>						
12pt/256	18 x 12	457 x 305	79	—	100	53667
<b>BOTTLE NECKER FOLDED 6-UP</b>						
12pt/256	18 x 12	457 x 305	79	—	100	53669
	18 x 12	457 x 305	79	—	500	53670
<b>CUP SLEEVE 5-UP</b>						
12pt/256	18 x 12	457 x 305	79	—	100	53675
	18 x 12	457 x 305	79	—	500	53676
<b>FLASH DRIVE MAILER 1-UP</b>						
14pt/298	18 x 12	457 x 305	91	—	100	53651
<b>FLOWER TOP BOX 1-UP</b>						
14pt/298	18 x 12	457 x 305	91	—	100	53645
	18 x 12	457 x 305	91	—	500	53646
<b>FOUR-SIDED TENT CARD 1-UP</b>						
14pt/298	18 x 12	457 x 305	91	—	100	53673
	18 x 12	457 x 305	91	—	500	53674
<b>GENERAL PURPOSE BOX 4.75 X 3.1 X 2 1-UP</b>						
14pt/298	18 x 12	457 x 305	91	—	100	53623
	18 x 12	457 x 305	91	—	500	53624
<b>GENERAL PURPOSE BOX 6 X 3.875 X 2.5 1-UP</b>						
14pt/298	20.5 x 14.33	521 x 364	124	—	500	53622
<b>GIFT BOX 3-UP</b>						
14pt/298	18 x 12	457 x 305	91	—	100	53649
<b>GIFT CARD HOLDER 4-UP</b>						
14pt/298	17 x 11	432 x 279	79	—	100	53677
	17 x 11	432 x 279	79	—	500	53678
<b>GOLF BALL SLEEVE 2-UP</b>						
14pt/298	18 x 12	457 x 305	91	—	100	53625
	18 x 12	457 x 305	91	—	500	53626
<b>GOLF BALL SLEEVE WITH HOLES 2-UP</b>						
14pt/298	18 x 12	457 x 305	91	—	500	53628

# MOHAWK DIMENSIONAL

## MOHAWK CAST-COATED ONE SIDE

WEIGHT LBS/GSM	INCHES	MM	M WT	SHEETS/ PACKAGE	SHEETS/ CARTON	CODE NUMBER
-------------------	--------	----	---------	--------------------	-------------------	----------------

### GOLF TEE/MARKER PACK 4-UP (HOLDS FOUR TEES)

14pt/298	18 x 12	457 x 305	91	—	100	53631
	18 x 12	457 x 305	91	—	500	53632

### INVITATION MAILER 2-UP

12pt/256	18 x 12	457 x 305	79	—	100	53657
	18 x 12	457 x 305	79	—	500	53658

### LUNCH BOX 1-UP

14pt/298	20.5 x 14.33	521 x 364	124	—	100	53639
	20.5 x 14.33	521 x 364	124	—	500	53640

### MEGAPHONE (10 INCHES) 1-UP

14pt/298	18 x 12	457 x 305	91	—	100	53685
	18 x 12	457 x 305	91	—	500	53686

### MEGAPHONE (11 INCHES) 1-UP

18pt/335	20.5 x 14.33	521 x 364	140	—	100	53683
	20.5 x 14.33	521 x 364	140	—	500	53684

### PEN/PENCIL CUP 1-UP

12pt/256	18 x 12	457 x 305	79	—	100	53681
	18 x 12	457 x 305	79	—	500	53682

### PHOTO CARD BOX 5 X 7 1-UP

14pt/298	18 x 12	457 x 305	91	—	100	53635
----------	---------	-----------	----	---	-----	-------

### PHOTO POSTCARD WITH STAND 1-UP

12pt/256	18 x 12	457 x 305	79	—	500	53664
----------	---------	-----------	----	---	-----	-------

### PHOTO PICTURE SHEET

10pt/230	17 x 11	432 x 279	50	—	500	53666
----------	---------	-----------	----	---	-----	-------

### PHOTO TOWER 1-UP

14pt/298	13 x 19	330 x 483	105	—	100	53659
	13 x 19	330 x 483	105	—	500	53660

### PLAYING CARD BOX 3-UP

14pt/298	18 x 12	457 x 305	91	—	100	53617
----------	---------	-----------	----	---	-----	-------

### POCKET FOLDER TAPE TAB 1-UP

14pt/298	20.5 x 14.33	521 x 364	124	—	100	53601
	20.5 x 14.33	521 x 364	124	—	500	53602

### POCKET FOLDER POCKETS ONLY (PART ONE OF TWO) 1-UP

12pt/256	17 x 11	432 x 279	79	—	100	53609
	17 x 11	432 x 279	79	—	500	53610

# MOHAWK DIMENSIONAL

## MOHAWK CAST-COATED ONE SIDE

WEIGHT LBS/GSM	INCHES	MM	M WT	SHEETS/ PACKAGE	SHEETS/ CARTON	CODE NUMBER
-------------------	--------	----	---------	--------------------	-------------------	----------------

### POCKET FOLDER SCORED FOLDER ONLY (PART TWO OF TWO) 1-UP

14pt/298	18 x 12	457 x 305	91	—	500	53604
----------	---------	-----------	----	---	-----	-------

### POPCORN/CANDY BOWL 2-UP

14pt/298	18 x 12	457 x 305	79	—	100	53671
	18 x 12	457 x 305	79	—	500	53672

### PURSE BOX 1-UP

14pt/298	20.5 x 14.33	521 x 364	124	—	100	53641
	20.5 x 14.33	521 x 364	124	—	500	53642

### PYRAMID BOX 2-UP

12pt/256	18 x 12	457 x 305	79	—	500	53644
----------	---------	-----------	----	---	-----	-------

### TENT CARD VERTICAL 2-UP

14pt/298	18 x 12	457 x 305	91	—	100	53679
	18 x 12	457 x 305	91	—	500	53680

### TOOTHPASTE BOX 2-UP

14pt/298	18 x 12	457 x 305	91	—	500	53638
----------	---------	-----------	----	---	-----	-------

### WINE BOTTLE BOX (NO WINDOW) 1-UP

18pt/335	20.5 x 14.33	521 x 364	140	—	500	53648
----------	--------------	-----------	-----	---	-----	-------

Dry toner presses only



# MOHAWK DIMENSIONAL

## MOHAWK COLOR COPY ULTRA GLOSS C1S WHITE

WEIGHT LBS/GSM	INCHES	MM	M WT	SHEETS/ PACKAGE	SHEETS/ CARTON	CODE NUMBER
-------------------	--------	----	---------	--------------------	-------------------	----------------

### 4 X 4 BOX 1-UP

12pt/250	18 x 12	457 x 305	76.43	50	250	37-568
	18 x 12	457 x 305	76.43	—	50	37-668

### DOOR HANGER 4-UP

12pt/250	18 x 12	457 x 305	76.43	50	250	37-566
	18 x 12	457 x 305	76.43	—	50	37-666

### GIFT BOX 2-UP

12pt/250	18 x 12	457 x 305	76.43	50	250	37-568
	18 x 12	457 x 305	76.43	—	50	37-668

### GOLF BALL SLEEVE 2-UP

12pt/250	18 x 12	457 x 305	76.43	50	250	37-569
	18 x 12	457 x 305	76.43	—	50	37-669

### GREETING CARD 2-UP

12pt/250	18 x 12	457 x 305	76.43	50	250	37-560
	18 x 12	457 x 305	76.43	—	50	37-660

### TABLE TENT 2-UP

12pt/250	18 x 12	457 x 305	76.43	50	250	37-569
	18 x 12	457 x 305	76.43	—	50	37-669

### POCKET FOLDER TAPE TAB 1-UP

12pt/250	20.5 x 14.33	521 x 364	104	50	250	37-565
	20.5 x 14.33	521 x 364	104	—	50	37-665

### POCKET FOLDER TWO PART SET

12pt/250	18 x 12	457 x 305	76.43	250 sets/ctn		37-670*
	18 x 12	457 x 305	76.43	50 sets/ctn		37-671*

Dry toner presses only

\*Package contains both taped pockets and scored folder in one box

## MOHAWK DIMENSIONAL

### MOHAWK EVERYDAY DIGITAL SMOOTH UNCOATED DIGITAL WITH I-TONE WHITE

WEIGHT LBS/GSM	INCHES	MM	M WT	SHEETS/ PACKAGE	SHEETS/ CARTON	CODE NUMBER
-------------------	--------	----	---------	--------------------	-------------------	----------------

#### POCKET FOLDER TWO PART SET

100c/270	18 x 12	457 x 305	86.08	250 sets/ctn		51670*
	18 x 12	457 x 305	86.08	50 sets/ctn		51671*

\*Package contains both taped pockets and scored folder in one box

### MOHAWK FLIP CARDS

WEIGHT LBS/GSM	INCHES	MM	M WT	SHEETS/ PACKAGE	SHEETS/ CARTON	CODE NUMBER
-------------------	--------	----	---------	--------------------	-------------------	----------------

#### FLIP CARD 3 X 3 SMOOTH

60t/89	8.5 x 11	216 x 279	34	200	1000	95101
--------	----------	-----------	----	-----	------	-------

#### FLIP CARD 3.5 X 4.5 SMOOTH

60t/89	8.5 x 11	216 x 279	34	200	1000	95102
--------	----------	-----------	----	-----	------	-------

Dry toner presses only

# MOHAWK DIMENSIONAL

## MOHAWK SUPERFINE EGGHELL DIGITAL WITH I-TONE ULTRAWHITE

WEIGHT LBS/GSM	INCHES	MM	M WT	SHEETS/ PACKAGE	SHEETS/ CARTON	CODE NUMBER
-------------------	--------	----	---------	--------------------	-------------------	----------------

### 4 X 4 BOX 1-UP

100c/270	18 x 12	457 x 305	83.08	50	250	20-1079
	18 x 12	457 x 305	83.08	—	50	20-1080

### DOOR HANGER 4-UP

100c/270	18 x 12	457 x 305	83.08	50	250	20-1056
	18 x 12	457 x 305	83.08	—	50	20-1066

### GIFT BOX 2-UP

100c/270	18 x 12	457 x 305	83.08	50	250	20-1058
	18 x 12	457 x 305	83.08	—	50	20-1068

### GOLF BALL SLEEVE 2-UP

100c/270	18 x 12	457 x 305	83.08	50	250	20-1081
	18 x 12	457 x 305	83.08	—	50	20-1082

### GREETING CARD 2-UP

100c/270	18 x 12	457 x 305	83.08	50	250	20-1060
	18 x 12	457 x 305	83.08	—	50	20-1070

### TABLE TENT 2-UP

100c/270	18 x 12	457 x 305	83.08	50	250	20-1059
	18 x 12	457 x 305	83.08	—	50	20-1069

### POCKET FOLDER TAPE TAB 1-UP

100c/270	20.5 x 14.33	521 x 364	113	50	250	20-1075
	20.5 x 14.33	521 x 364	113	—	50	20-1076

### POCKET FOLDER TWO PART SET

100c/270	18 x 12	457 x 305	83.08	250 sets/ctn		20-1084*
	18 x 12	457 x 305	83.08	50 sets/ctn		20-1085*

\*Package contains both taped pockets and scored folder in one box

### WINE BOTTLE BOX (WINDOW) 1-UP

120c/324	20.5 x 14.33	521 x 364	136	50	250	20-1064
	20.5 x 14.33	521 x 364	136	—	50	20-1074

### WINE BOTTLE BOX (WINDOW) 2-UP

120c/324	20 x 28	508 x 771	258	50	250	20-1077
----------	---------	-----------	-----	----	-----	---------

# MOHAWK DIMENSIONAL

## MOHAWK VIA LINEN DIGITAL WITH I-TONE BRIGHT WHITE

WEIGHT LBS/GSM	INCHES	MM	M WT	SHEETS/ PACKAGE	SHEETS/ CARTON	CODE NUMBER
<b>4 X 4 BOX 1-UP</b>						
110c/298	18 x 12	457 x 305	91.38	50	250	147664
	18 x 12	457 x 305	91.38	—	50	147666
<b>DOOR HANGER 4-UP</b>						
110c/298	18 x 12	457 x 305	91.38	—	50	147666
<b>GIFT BOX 2-UP</b>						
110c/298	18 x 12	457 x 305	91.38	50	250	147558
	18 x 12	457 x 305	91.38	—	50	147658
<b>GOLF BALL SLEEVE 2-UP</b>						
110c/298	18 x 12	457 x 305	91.38	50	250	147667
	18 x 12	457 x 305	91.38	—	50	147668
<b>TABLE TENT 2-UP</b>						
110c/298	18 x 12	457 x 305	91.38	50	250	147559
<b>POCKET FOLDER TAPE TAB 1-UP</b>						
110c/298	20.5 x 14.33	521 x 364	124	50	250	147565
	20.5 x 14.33	521 x 364	124	—	50	147665
<b>POCKET FOLDER TWO PART SET</b>						
110c/298	18 x 12	457 x 305	91.38	250 sets/ctn		147670*
	18 x 12	457 x 305	91.38	50 sets/ctn		147671*

\*Package contains both taped pockets and scored folder in one box

# MOHAWK DIMENSIONAL

## MOHAWK SYNTHETIC PREMIUM POLYESTER

WEIGHT LBS/GSM	INCHES	MM	M WT	SHEETS/ PACKAGE	SHEETS/ CARTON	CODE NUMBER
-------------------	--------	----	---------	--------------------	-------------------	----------------

### WHITE BADGE 6-UP

8.0/260	8.5 x 11	216 x 279	36	—	500	53502
---------	----------	-----------	----	---	-----	-------

### WHITE BADGE 8-UP

8.0/260	8.5 x 11	216 x 279	36	—	500	53504
---------	----------	-----------	----	---	-----	-------

### WHITE BOOKMARK 8-UP

8.0/260	8.5 x 11	216 x 279	36	—	500	53506
---------	----------	-----------	----	---	-----	-------

### WHITE BUTTERFLY FOLD-OVER ID CARDS 4-UP

8.0/260	8.27 x 11.69	210 x 297	40	—	100	53535
---------	--------------	-----------	----	---	-----	-------

### WHITE DOOR HANGER 3-UP

8.0/260	8.5 x 11	216 x 279	36	—	500	53508
---------	----------	-----------	----	---	-----	-------

### WHITE ID CARD 6-UP

8.0/260	8.5 x 11	216 x 279	36	—	500	53510
---------	----------	-----------	----	---	-----	-------

### WHITE LUGGAGE TAG 4-UP

8.0/260	8.5 x 11	216 x 279	36	—	500	53512
---------	----------	-----------	----	---	-----	-------

### WHITE MULTI PACK

8.0/260	8.5 x 11	216 x 279	36	—	500	53514
---------	----------	-----------	----	---	-----	-------

Dry toner presses only

### WHITE PARKING PASS 6-UP

8.0/260	8.5 x 11	216 x 279	36	—	500	53516
---------	----------	-----------	----	---	-----	-------

### WHITE PEEL OFF ID CARDS 8-UP

8.0/260	8.27 x 11.69	210 x 297	40	—	100	53534
---------	--------------	-----------	----	---	-----	-------

### WHITE PLANT TAG 13-UP

5.0/160	8.5 x 11	216 x 279	26	—	100	53517
---------	----------	-----------	----	---	-----	-------

### WHITE PRE-SCORE HORIZONTAL 1-UP

8.0/260	8.27 x 11.69	210 x 297	40	—	100	53523
11.0/365	8.27 x 11.69	210 x 297	60	—	100	53524

### WHITE PRE-SCORE VERTICAL 1-UP

8.0/260	8.27 x 11.69	210 x 297	40	—	100	53525
11.0/365	8.27 x 11.69	210 x 297	60	—	100	53526

### WHITE TAG 8-UP

8.0/260	8.5 x 11	216 x 279	36	—	500	53520
---------	----------	-----------	----	---	-----	-------

### WHITE WOBBLER 2-UP

8.0/260	8.5 x 11	216 x 279	36	—	500	53522
---------	----------	-----------	----	---	-----	-------

# MOHAWK DIMENSIONAL

## MOHAWK SYNTHETIC PREMIUM POLYESTER

WEIGHT LBS/GSM	INCHES	MM	M WT	SHEETS/ PACKAGE	SHEETS/ CARTON	CODE NUMBER
-------------------	--------	----	---------	--------------------	-------------------	----------------

### WHITE WRIST BAND 1 X 11 8-UP (PRE TAPED)

4.0/125	8.5 x 11	216 x 279	17.91	—	500	53530
	8.5 x 11	216 x 279	17.91	—	100	53529

### WHITE WRIST BAND 1 X 10.4375 8-UP (PRE TAPED)

5.0/170	8.5 x 11	216 x 279	26	—	100	53531
---------	----------	-----------	----	---	-----	-------

### BRIGHT ORANGE WRIST BAND 1 X 10.4375 8-UP (PRE TAPED)

5.0/170	8.5 x 11	216 x 279	26	—	100	53533
---------	----------	-----------	----	---	-----	-------

### BRIGHT YELLOW WRIST BAND 1 X 10.4375 8-UP (PRE TAPED)

5.0/170	8.5 x 11	216 x 279	26	—	100	53532
---------	----------	-----------	----	---	-----	-------

Dry toner presses only

## MOHAWK SYNTHETIC PREMIUM POLYESTER MATTE / GLOSS WHITE

WEIGHT LBS/GSM	INCHES	MM	M WT	SHEETS/ PACKAGE	SHEETS/ CARTON	CODE NUMBER
-------------------	--------	----	---------	--------------------	-------------------	----------------

### PRE-SCORE HORIZONTAL 1-UP

8.0/255	8.27 x 11.69	210 x 297	40	—	100	53527
---------	--------------	-----------	----	---	-----	-------

### PRE-SCORE VERTICAL 1-UP

8.0/255	8.27 x 11.69	210 x 297	40	—	100	53528
---------	--------------	-----------	----	---	-----	-------